



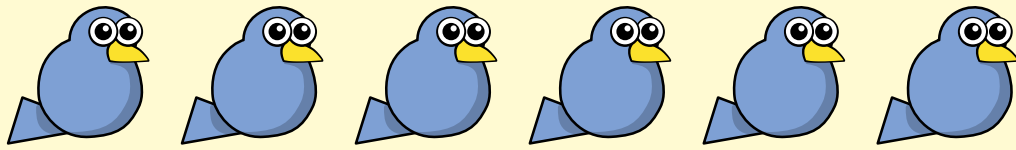
# ADDITION AND SUBTRACTION (WITHIN 20)

White  
Rose  
Maths



From White Rose Maths schemes for Year 1 Spring Term  
**BLOCK 1 - ADDITION AND SUBTRACTION (WITHIN 20)**

1 There are 6 birds in a tree.



5 more birds fly into the tree.

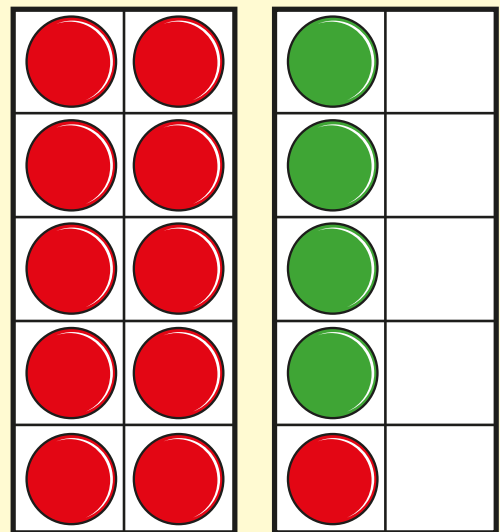


How many birds are there now?

birds

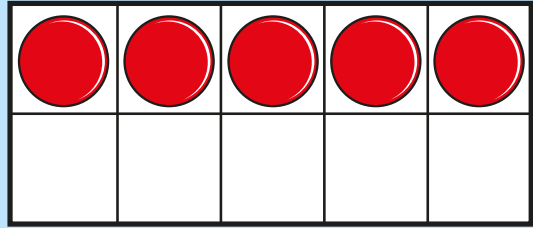
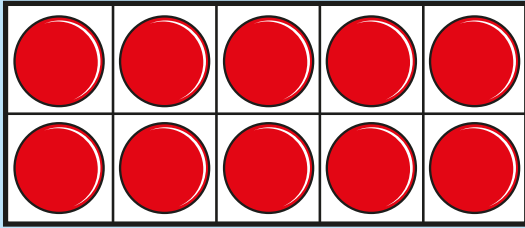
2 Complete the number sentence.

$$11 + 4 = \square$$

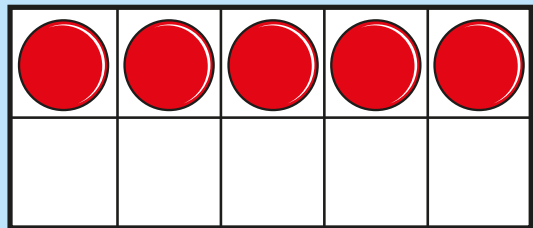
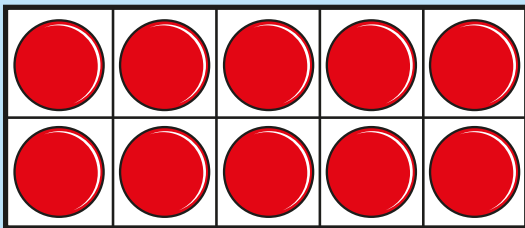


3

Work out  $15 + 5 =$



Work out  $15 - 5 =$



4

Match the number sentences.

One has been done for you.



$15 + 2$

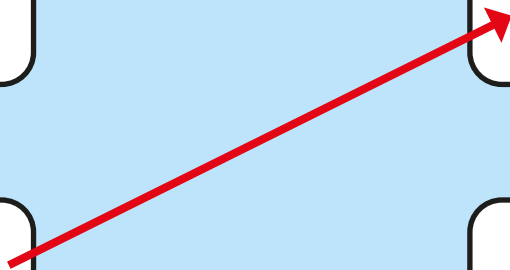
$10 + 3$

$3 + 10$

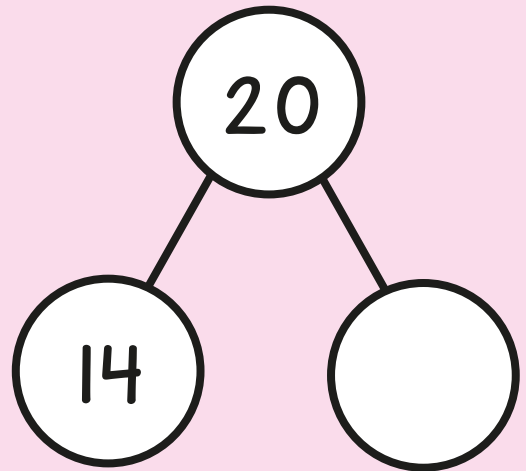
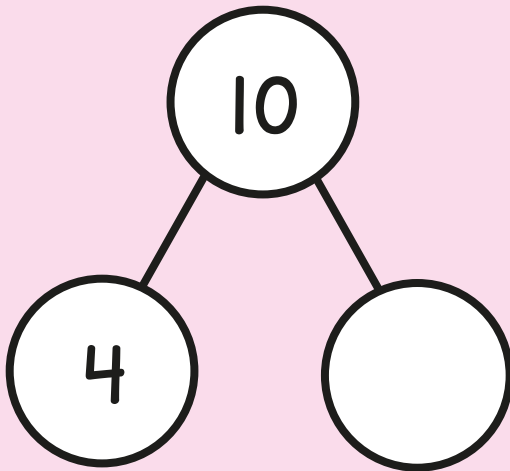
$12 + 5$

$13 + 4$

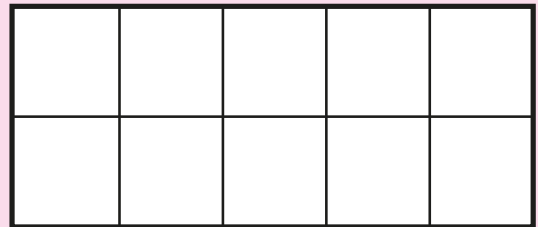
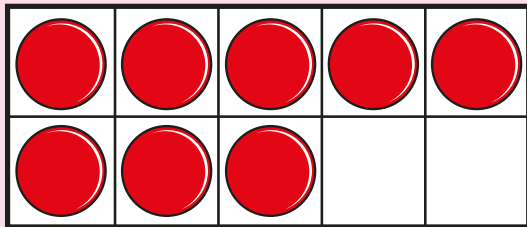
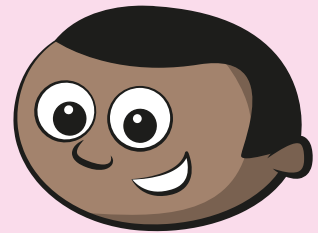
$12 + 5$



5 Complete the part-whole models.



6 Mo has 8 counters.



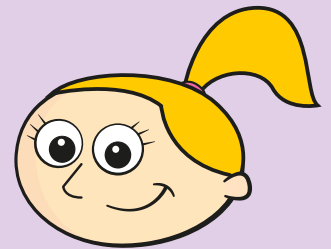
He adds 8 more counters.

How many counters does he have now?

counters

7 Work out  $7 + 9 =$

8 Eva has 2 bags of marbles.  
She has 20 marbles altogether.  
Circle the bags that Eva has.



9 Complete the number sentences.

$$16 + 3 > 16 + \square$$

$$16 + \square < 19$$

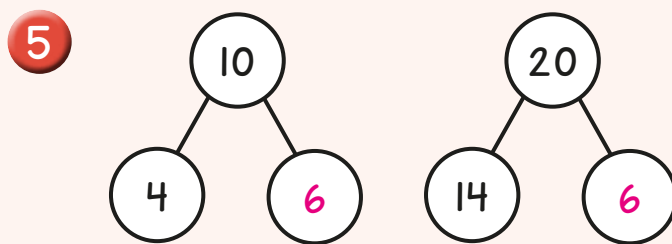
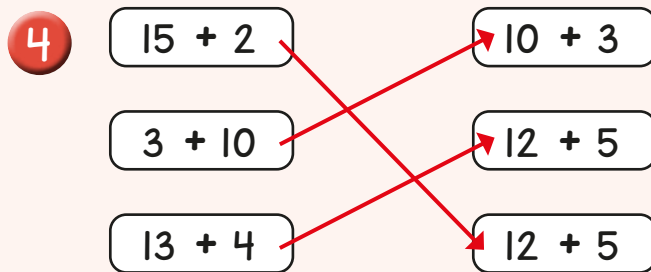
# Answers



1 11 birds

2  $11 + 4 = 15$

3  $15 + 5 = 20$   
 $15 - 5 = 10$



6 16 counters

7 16



9  $16 + 3 > 16 + \square$  (0, 1 or 2)

$16 + \square < 19$  (0, 1 or 2)

Pink arrows connect the boxes in the two inequalities. One arrow points from the box in the first inequality to the box in the second, and another points from the box in the second inequality back to the box in the first.